

20% MORE CONTENT
in iPad version

STORAGE
solutions

\$100 OR LESS
home updates

2 INGREDIENT
recipes

DIY
paint techniques

CANADIAN HOME trends

CanadianHomeTrends.com

73+ REAL LIFE trends



CHECK THIS OUT!

The hottest places to
shop in Canada!

Save \$\$\$\$ on!

**RUGS, STORAGE, LIGHTING,
PAINT, DRAPERIES AND
MORE!**

DISPLAY UNTIL **APRIL 15, 2015**

WINTER 2015 \$5.50



PM 41438018

Marc Stuydil

Our Contributors



Glen Peloso

NATIONAL DESIGN EDITOR FOR
CANADIAN HOME TRENDS

Peloso Alexander Interiors
www.pelosoalexander.com

“If I won the lottery, I would book a trip around the world!”



Michelle Cook

Indesign

“The first thing I notice about people, is their energy.”



Nicholas Rosaci

DIY EDITOR FOR CANADIAN
HOME TRENDS

Nicholas Rosaci Interiors
www.rosaci.com

“I got my big break when Kimberley Seldon asked me to create DIYs, which ended up on CityLine.”



Jo Alcorn

STYLE EDITOR FOR
CANADIAN HOME TRENDS

Whitewash & Co.
www.whitewashco.ca

“If my life story would be turned into a movie, I would love it if Jennifer Lawrence or Pink would play me.”



Jane Lockhart

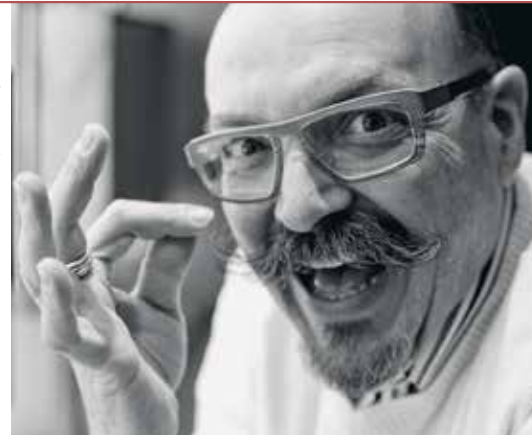
Jane Lockhart Interior Design
www.janelockhart.com

“The craziest colour I have ever painted a room is black. Dark colours create a dramatic feel. Disregard the idea that it will darken the room. As long as you light the area well, and add contrasting elements and accessories, the room will look great!”

Massimo Capra

CANADIAN HOME TRENDS' FOOD EDITOR
Mistura, Boccone Trattoria Veloce and Boccone Pronto
www.massimocapra.com

“My favourite kitchen gadgets are definitely my set of microplanes, all sizes and shapes.”



Kim Bartley

Kim Bartley Design
www.kimbartleydesign.com

“If I were to write a book, it would be ‘Change Your Room, Change Your Story.’ I believe that you can change your life by changing the space that you live in. I would love to address the importance of redesigning one’s space to help them live their ideal life.”



CRAFTING A

Kitchen



Text
J. Lynn Fraser

Photography
Brandon Barré

“The choice to have windows set into some cabinet doors was for two reasons, to display Linda’s glassware and to keep the kitchen light despite its size.”

JANE LOCKHART, DESIGNER







With

two of her three adult children still at home, Linda Gill, an Executive Assistant to a publisher, and her banker husband, needed to optimize available space in their kitchen. "I wanted maximum storage and better use of my breakfast nook," Linda comments.

"The kitchen and nook," designer Jane Lockhart notes, "is used for cooking, working, lounging and gatherings." Age was an issue for the 80 year-old kitchen tucked into the back of the North Toronto home. "Everything was falling apart," Jane says. Extra space was added by utilizing part of the home's back porch.

Blending the talents of many craftspeople, the kitchen and nook showcases tumbled natural stone tiles, wood sourced from Mennonites, and custom cabinets. "The quality of workmanship was beyond what I expected," Linda notes. Hand-painted garden details on the back-splashes were "inspired by Linda's love of florals and English country paintings," according to Jane. The craftspeople's combined skills created an English, countryside kitchen in this Tudor-style home.

All of the kitchen's special features are based on Linda's wish list — "I had been saving magazine photos for years. I now have everything I have ever wanted." The kitchen has wine storage, a built-in bread basket, a spice drawer, and appliances hidden behind cabinetry. The bronze faucets were ordered from England. Antique-style cabinet handles, leaded glass inserts, and floral plates all enhance the kitchen's country ambiance. Jane chose the quartz counter tops because they are "highly durable and reminded me of old English porcelain."

Cerise ribbons and accent pillows bring a kiss of colour to the nook. Providing both storage and seating, the banquette seats four. "But we have squeezed in five," Linda comments. Custom made,





Space Designed by Jane Lockhart, B.A.A.I.D, intern ARIDO, Principal Designer of Jane Lockhart Interior Design, www.janelockhart.com; **Photography**, Brandon Barré, www.brandonbarre.com; **Cook Top**, Wolf, www.subzero-wolf.com; **Dishwasher**, Miele Advantage, www.miele.ca; **Microwave Oven**, Wolf, www.subzero-wolf.com; **Range/Oven**, Wolf Electric, www.subzero-wolf.com; **Refrigerators**, Sub Zero, www.subzero-wolf.com; **Ventilation**, Sirius, www.siriuscapp.com/canada; **Custom Cabinetry**, Brice's Furniture, www.bricesfurniture.com; **Counter tops**, Cambria, www.cambriacanada.com; **Faucets/Fittings**, Perrin & Rowe, www.perrinandrowe.co.uk; **Sinks**, Kindred, www.frankekindred.com; **Back splash**, Cercan Tile, www.cercantile.com; **Wall/Ceiling**, Benjamin Moore, www.benjaminmoore.ca

the oak and maple table was designed to look like a family heirloom. "When choosing a dining table for a small space, select one that is round as it creates better circulation. Ensure it has a pedestal base as this is easier to push chairs up to," Jane advises.

Overhead, the crystal chandelier lends a spritz of sparkle. Its bronzed metal matches the kitchen's faucets and cabinet hardware. Jane suggests that the height of a chandelier should always be "20 inches from the top of the table to the bottom of the fixture." Oak paneling replaces the old vinyl flooring original to the rooms. The new flooring was given a finish that blends it with flooring in the rest of the home.

"Some people come over and want to stay in the breakfast area, it is so cozy," Linda states.

Part of Linda's wish list for the renovation was a niche of her own to work in. Jane designed a tall, slim workstation to house Linda's cookbooks while providing a work space. Her 'office' chair can also be used at the breakfast nook's table. Incorporated into the breakfast nook's walls is a blackboard, that can be seen from the kitchen, allowing this busy family to leave messages. Crown moulding unites the architecture of both rooms.

"This is absolutely my favourite room in the house," Linda exclaims. "Everyone thinks it is amazing."

