

# White Night

For a more interesting space, use an assortment of white shades

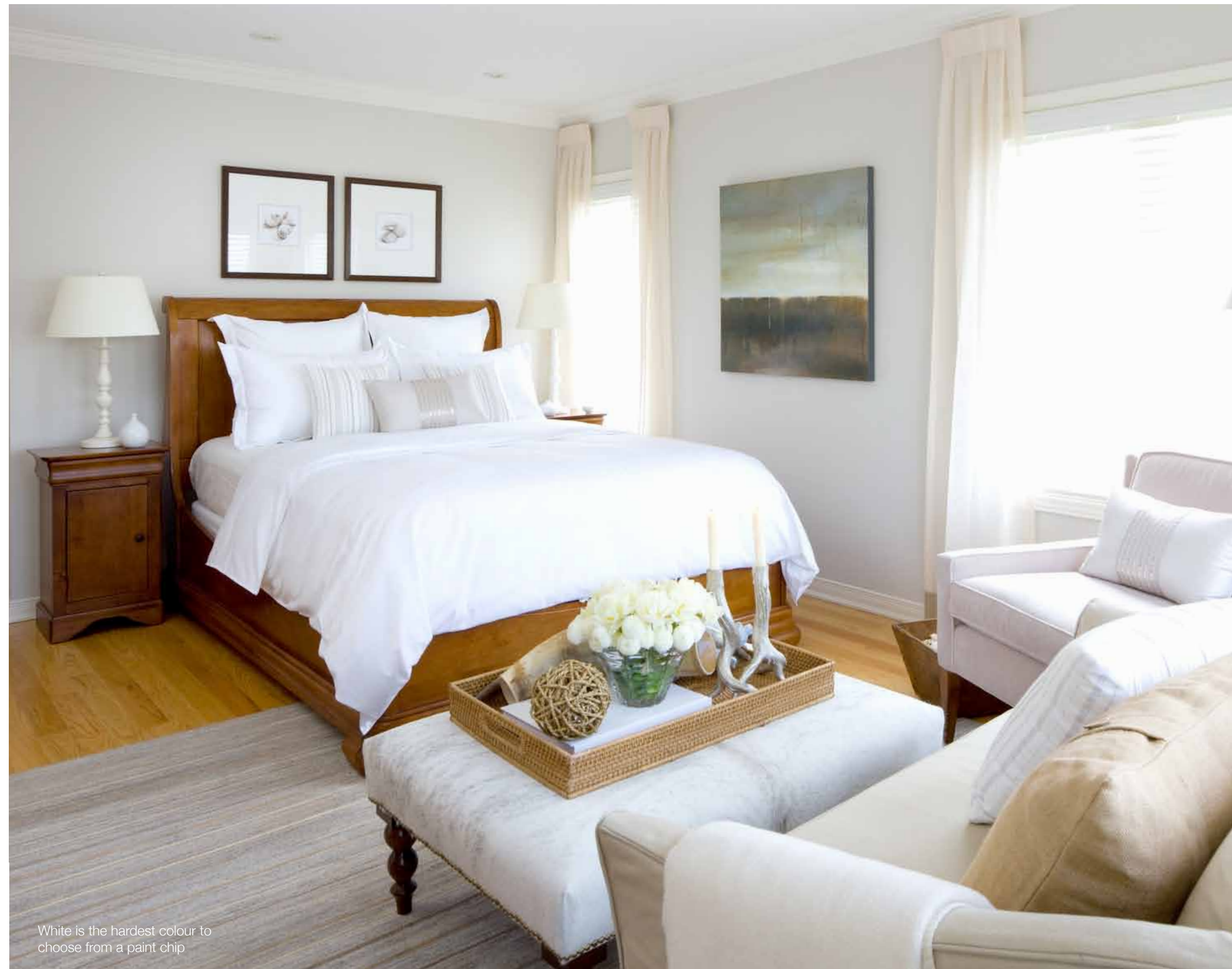


jane lockhart INTERIOR DESIGN

By Jane Lockhart

Jane Lockhart B.A.A.I.D., Intern, A.R.I.D.O is the principal Interior Designer with Jane Lockhart Interior Design in Toronto and host of Colour Confidential on W Network.

Interior Design and Story by Jane Lockhart | Jane Lockhart Interior Design  
www.janelockhart.com | info@janelockhart.com  
Photography by Brandon Barré courtesy Colour Confidential, W Network



White is the hardest colour to choose from a paint chip

It's not often that my clients request an all-white room, but that's just what Jasmine asked Jane Lockhart Interior Design to help her with in her bedroom. She explained how she struggled on her own to find just the right white paint colour for her bedroom walls adding that white and light natural colours calm and relax her so a white scheme would be the best colour scheme for her bedroom and would brighten the space for the summer months!



Other natural fabrics were used throughout the room to maintain the calm and peaceful mood of the room. Lined in lightweight muslin, natural linen drapery panels in a pale neutral shade cover the five windows in this corner room and provide protection from the sun.

A small existing settee was reupholstered in natural bamboo fabric in warm, sandy beige to blend seamlessly with the floor. This material is highly durable, sustainable and comes in multiple colours to add a further natural element. A cowhide ottoman was placed with the loveseat to create contrast of pattern and texture.

Natural fabrics were used to maintain the room's calm & peaceful mood

Choosing the Right White

Contrary to popular belief, 'white' is a colour when talking about pigments. It is simply the lightest value or tint of any colour family. Basically all the strong or bright colours we can think of have a really dark version or really light version of them. So bright red, for example, is rich burgundy when we think of it as a deep shade and light, soft pink—almost white, when we think of this red in the light colour spectrum. So no "white" is just white...it's a tone of whatever colour it began as. That's why white is truly the hardest colour to select from a small paint chip! To really see the tone of white you have selected, it needs to be applied to a large area so that you're able to pick up its subtle differences.

Jasmine had tried many options of white and found they all looked different from the chip once painted on the wall, and the names of the colours were no help either (never trust the name of a paint chip!). So to calm Jasmine, we looked at a series of light natural colours inspired by nature. Natural elements like birch-bark, sand, white marble, and lichen were collected to create a palette of colours from which she could choose. From the palette she eventually chose a soft white with a hint of grey-green for the walls. This was an excellent choice to subdue the yellow tone prominent in the blonde hardwood flooring. This wall colour looks fabulous against her simple dark brown sleigh bed and side tables. Crisp white cotton bed linens and a few toss pillows in a textured white fabric dress the bed for a simple and peaceful look.



- » To Left: Fresh white linens and warm white upholstery and drapery fabrics complement the rich natural wood tones in the room.
- » To Right: Crisp white mixed with natural tones and textures instantly refresh a room's tired décor.





SUN VALLEY BRONZE




**V**  
**S**  
**B**

VICTORIA SPECIALITY  
 HARDWARE & PLUMBING  
*Established 1995*

1990 Oak Bay Avenue, Victoria, BC, Canada V8R 1E2 TEL 250-598-2966 TOLL/FREE 1-888-274-6779 [www.vshl.ca](http://www.vshl.ca)



Finally, the pieces that really make this a peaceful space are the addition of natural accessories like decorative wicker balls, beeswax candles, a jute and wool rug and uniquely shaped driftwood logs. Jasmine's traditional ornate gold wall mirror was spray-painted white to suite the tone-on-tone nature of the room.



Tip: When doing a "white" room, remember that not all the shades and tints of white will match. That's exactly the point of a natural colour palette. The subtle variations of light colours that blend seamlessly into the next will offer dimension to the room. It is important to ensure there is plenty of texture within each of the light shades to ensure the space stays interesting and warm.

Jasmine loves her serene, soft and neutral bedroom and admits that white is still her favourite colour but has learned that mixing a variety of natural whites makes a much more interesting space. It's now a peaceful, relaxing, easy and breezy space - exactly what Jasmine had pictured in her night time dreams!

Top Left: Subtle shades and tones of white are elegantly defined by decorative details and textures.

Top Right: An old ornate framed mirror painted in white reflects light around the room



WE BUILD THE WEST COAST'S VERY BEST HOMES.



Need more space?

Locally made, quality-Controlled. Murphy Wall-Beds guarantees your bed is made with top-quality cabinetry, carefully matching grains, and the best in hardware, ensuring you a lifetime warranty. We can also create custom cabinetry for entertainment centres and storage. The island's authentic Murphy bed dealer for over 20 years.

**MURPHY WALL-BEDS**  
OF CANADA

3075 Douglas Street | 250.744.2195 | murphybeds-victoria.com

PROUD RECIPIENT OF 15 GOLD CARE AWARDS; INCLUDING 2006 & 2009'S PROJECT OF THE YEAR

1986 Mills Road, Sidney, BC V8L 5Y3 T 250 656 8006 F 250 656 8009 E build@coastal.cn W www.coastal.cn

